

LOWRANCE®

MARINE ELECTRONICS FOR 2017



LOWRANCE®

TECHNOLOGY ICON REFERENCE GUIDE

To help you identify which products offer the features and functionality you require we have provided an quick and easy-to-read icon guide. Simply look for features you require by the product to help you select the right one for you.

 STRUCTURESCAN® 3D	 TOTALSCAN™	 STRUCTURESCAN® HD	 CHIRP	 TRACKBACK™ VIEW	 DOWNSCAN IMAGING™	 BROADBAND SOUNDER™
 ASP ADVANCED SIGNAL PROCESSING	 GPS 10 Hz GPS	 AIS AUTOMATIC IDENTIFICATION SYSTEM	 BROADBAND RADAR™	 C-MAP	 INSIGHT MAPPING	 INSIGHT GENESIS™
 NAVIONICS®	 SPOTLIGHTSCAN™	 WORLDWIDE BASEMAP	 MULTI-TOUCH	 TOUCHSCREEN	 WIRELESS BUILT-IN	 GOFREE™ SHOP
 SMARTSTEER™ CONTROL	 NMEA2000®	 NMEA 2000® ENGINE INTERFACING	 ETHERNET NETWORK	 SONICHUB® 2	 SIRIUSXM® MARINE WEATHER	 DSC VHF
 DUAL MICRO SD CARD SLOTS	 MICRO SD CARD SLOT	 VIDEO INPUT	 2 YEAR WARRANTY	 1 YEAR WARRANTY	 QUICK RELEASE MOUNT	 IPX7 WATERPROOF



A LEGACY BORN ON THE WATER

Everyone remembers that first catch.

The line tightens. The rod bends. That buzz of excitement that comes over you when you've hooked one. It is a memory we will keep forever; passing it down to the next generation, adding another chapter to a fishing tradition. Fishing makes you feel alive. We know the feeling. And after 60 years of helping anglers find fish, we know a thing or two about continuing a tradition as well.

From the beginning, Lowrance has used innovative design and leading sonar technology to help anglers find and catch more fish — a tradition of making it easier for anglers to recapture the enjoyment of their first catch, over and over again.

It all started in the 1950s, with Darrell Lowrance and his efforts to use transistorized sonar technology to detect fish.

"We are going to change the way people fish. And we are going to do it ourselves." – Darrell Lowrance

He did just that in 1957 with the introduction of the first recreational fishfinder, the FISH-LO-K-TOR, affectionately known by millions as the Little Green Box. His efforts didn't just change the way people fish, but paved the way for the recreational fishfinder industry. Lowrance, the brand, has continued on the path of innovation and achievement that still drives us today. We are dedicated to producing products with excellent performance features, long-lasting reliability at an exceptional value. For the last 60 years, Lowrance has pushed the industry forward with new innovations and breakthrough technologies.

From the FISH LO-K-TOR®, the first recreational fishfinder, to the new high-performance HDS Carbon, the best multifunction display of 2017 — our determination to help anglers catch more fish has been rivaled only by our commitment to produce the most innovative products on the market.

For the complete story on the history of Lowrance, visit WWW.LOWRANCE.COM.



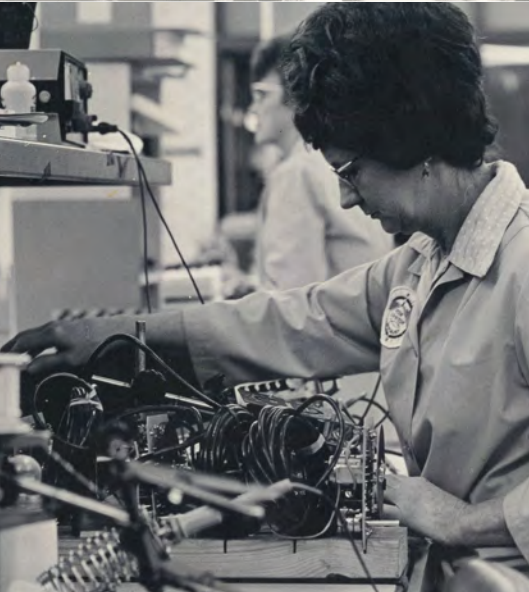


Table of Contents

02	HDS Carbon
04	HDS Gen 3 Series
06	StructureScan 3D
08	Elite-Ti
10	HOOK
12	Ice Machines
14	Sonar Innovations
16	GoFree
18	Mapping
20	Network Solutions
22	Feature Guide
24	Part Number List



LOWRANCE®

60

ANNIVERSARY



HDS

CARBON



HDS Carbon Key Features

Multi-touch display interface

StructureScan® 3D capability

Built-in CHIRP and Broadband Sounder®

SmartSteer™ control for Xi5 Trolling Motor and Outboard Pilot

Radar and SonicHub2™ audio server connectivity

Integrated wireless and Bluetooth® connectivity

NMEA 2000® and Ethernet connectivity

Built-in C-MAP charts with a multitude of mapping options (C-MAP, Navionics® and more)

SOLARMAX HD

SIZES AVAILABLE

7"

9"

12"



Optional features: StructureScan® 3D, TotalScan™, SmartSteer™ Control, NMEA 2000 Engine Interfacing, SonicHub® 2, Broadband Radar™, SiriusXM® Marine Weather, DSC VHF, Automatic Identification System

READY FOR BATTLE

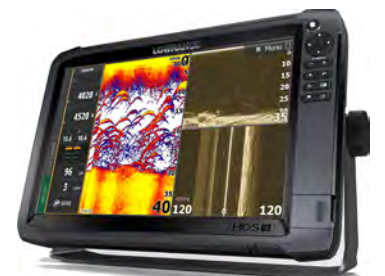
New Lowrance® HDS® Carbon units feature ultra-clear SolarMAX™ HD multi-touch displays with high-bright LED backlighting and advanced anti-reflective coatings to create wider viewing angles suitable for any lighting condition. Loaded with a dual core high-performance processor, HDS Carbon delivers faster redraw speeds and quicker response times to easily power dual-channel CHIRP sonar, dual network sounder, StructureScan® 3D, StructureMap™ and future high-powered fishfinding upgrades. HDS Carbon brings modern smartphone-like comfort with integrated wireless and Bluetooth® connectivity that supports the most advanced marine technology including a Network Analyzer that notifies users when new software is available and a Service Assistant that transmits a detailed network report directly to technical support for a custom hands-on assistance.

What's New With HDS Carbon

- Ultra-bright SolarMAX™ HD displays with greater resolution and a wider range of viewing angles
- High-performance Dual Core Processor for smoother navigation and faster sonar updates
- HDS Dual-Channel CHIRP Sonar – Requires dual-channel CHIRP sonar transducer
- HDS Network Dual Sounder – Cover more water and mark fish targets more clearly from a network of CHIRP sonar transducers

VesselView® Link

View all of your Mercury Smartcraft® engine data in one place – on your Lowrance® multifunction display. The Mercury® VesselView® Link interface module integrates SmartCraft® engine data with HDS Carbon and HDS Gen3 displays – providing quick access to RPM, speed, fuel remaining, battery voltage, trim tab data and Mercury Smart Modes, like Eco, Smart Tow®, Troll Control and Cruise Control. VesselView® Link puts all the data you want, where you want it – at your fingertips.



HDS[®]

FOR ANGLERS WHO WANT IT ALL

HDS Gen3 combines a bright, multi-touch display with leading fishfinder technologies including Trackback™, CHIRP Sonar, Broadband Sounder™, StructureScan 3D® with SideScan and DownScan Imaging™ and StructureScan® HD. HDS Gen3 units feature proven Lowrance® navigation technology and advanced integration, including Mercury® VesselView® Link, SmartSteer™ trolling motor/outboard motor control, Bluetooth® control of Power-Pole Shallow Water Anchors, Network Analyzer and Service Assistant integrated service tools, full operation capability via touchscreen or keypad, and built-in wireless connectivity, where map purchases and software updates can be downloaded directly to the unit.



Lowrance Outboard Pilot Cable-Steer and Hydraulic Autopilot

Our autopilot packs for Lowrance High Definition System (HDS) displays, provide automatic steering for cable-steer or hydraulic-steer outboard motors. An extra pair of hands when you need it, the Outboard Pilot, featuring Lowrance SmartSteer™ control from your HDS Carbon or HDS Gen3 displays, will steer to a heading, waypoint or along a route.



HDS Gen3 Key Features

Multi-touch display interface

StructureScan® 3D capability

Built-in CHIRP and Broadband Sounder®

SmartSteer™ control for Xi5 Trolling Motor and Outboard Pilot

Radar and SonicHub2™ audio server connectivity

Integrated wireless and Bluetooth® connectivity

NMEA 2000® and Ethernet connectivity

Built-in C-MAP charts with a multitude of mapping options (C-MAP, Navionics® and more)



Optional features: StructureScan® 3D, TotalScan™, Insight Mapping, SmartSteer™ Control, NMEA 2000 Engine Interfacing, SonicHub® 2, Broadband Radar™, SiriusXM® Marine Weather, DSC VHF, Automatic Identification System

SIZES AVAILABLE





StructureScan 3D gives freshwater and saltwater anglers a unique, three-dimensional view of fish, structure and bottom contours — making it easier to understand where fish and structure are located in relation to your boat. With StructureScan 3D, anglers spend less time searching for productive water and more time catching fish. StructureScan 3D requires a 3D module with transducer and a HDS Carbon or HDS Gen3 fishfinder/chartplotter display.

StructureScan 3D Exclusive Features

Easy-to-Understand Sonar Images

Find Key Fishing Areas Faster

Unrivaed SideScan Image Clarity and Range

High Definition Scanning Images

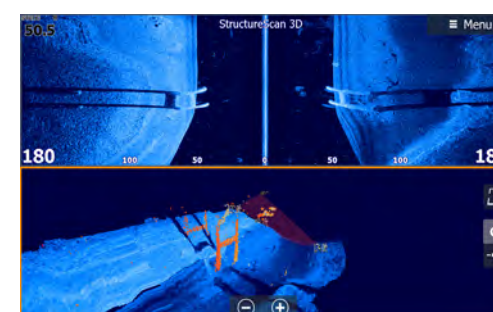
Leading Edge™ Scanning Reference

SelectScan™ Target Identification

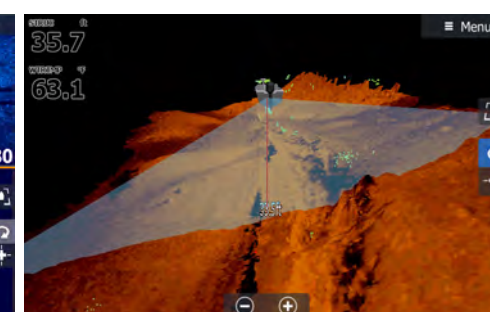
Vertical Enhancement



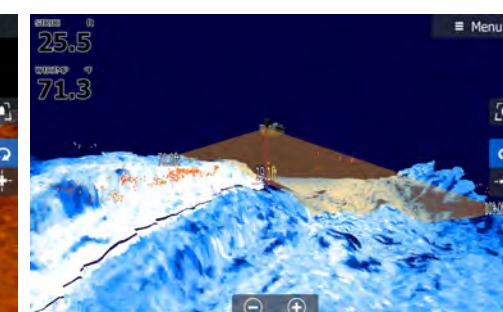
StructureScan 3D module and 3D Skimmer® transducer work exclusively with HDS Carbon and HDS Gen3 fishfinder/chartplotters.



StructureScan 3D showing ScanTrack™ view of fish holding near bridge abutment in both 3D and SideScan formats.



Distinct fish targets at different depths against drop offs.



Use Vertical Enhancement™ and different color palettes to make structure and targets even easier to see.

ELITE Ti FOR THE LOVE OF FISHING

The Lowrance Elite-Ti series matches premium features and functions with powerful performance — at an affordable price. Elite-Ti units have integrated wireless connectivity, Bluetooth® control of Power-Pole® Shallow Water anchors, Network Analyzer (Elite-12/9/7 Ti only) and Service Assistant integrated service tools, proven Lowrance® navigation with built-in C-MAP charts, and high-performance sonar. Boasting a high-resolution SolarMAX™ touchscreen, Elite-Ti displays have your sonar needs covered with Trackback™, StructureScan® HD compatibility and support for the TotalScan™ all-in-one transducer.



TotalScan™ Transducer

TotalScan™ matches proven Broadband Sounder and CHIRP Sonar with StructureScan® HD and DownScan Imaging™ technology — making it possible to target fish and search for fish-holding structure with the same transducer.

The TotalScan™ transducer features multiple mounting options and is fully compatible with displays featuring integrated support for StructureScan® HD, like Lowrance HDS Carbon, HDS Gen3, and Elite-Ti.



Power Pole® Connectivity

You can use the built-in wireless connectivity of HDS Carbon, HDS Gen3 or Elite-Ti displays to control one or more Power-Pole® Shallow Water anchors, equipped with the C-Monster Control System. Enjoy independent or simultaneous control of multiple power poles and make manual or automatic adjustments directly from your touchscreen.

Elite Ti Key Features

Easy-to-use, high-resolution touchscreen display

StructureScan® HD ready with TotalScan™ transducer

SmartSteer™ control for Xi5 Trolling Motor (12, 9, 7 models only)

Integrated wireless and Bluetooth® connectivity

NMEA 2000® engine support

Built-in C-MAP charts with a multitude of mapping options (C-MAP, Navionics® and more)



Optional features: TotalScan™, Navionics®, SmartSteer™ Control, NMEA 2000 Engine Interfacing, DSC VHF, Automatic Identification System

SIZES
AVAILABLE



HOOK

FOR ANY ANGLER, ANYWHERE

The HOOK series includes standalone fishfinders and chartplotters that offer proven features at a great value without compromising the quality anglers have come to expect from Lowrance. Easy to use and powered by proven fish-finding capabilities, the HOOK series combines the benefits of CHIRP Sonar (excludes HOOK-3x units) and DownScan Imaging™ technology to give you a clear and complete view of the underwater environment beneath your boat. With a built-in high sensitivity GPS antenna and trusted Lowrance navigation features, revisiting your favorite fishing spot is simple whether you use the built-in mapping, optional high-definition chart upgrades, or your own Insight Genesis® custom maps.



HOOK Series (7, 5, 4) Key Features

High-definition, color display

Built-in CHIRP Sonar plus DownScan Imaging™

Advanced Signal Processing (ASP™) reduces the need for sonar adjustments

Built-in enhanced basemap with multiple mapping options (C-MAP PRO, C-MAP MAX-N, Navionics® and more)

SIZES AVAILABLE



Optional features: Insight Mapping, Navionics®, C-MAP



HOOK-3x Key Features

High resolution LED backlit display

Advanced Signal Processing (ASP™) reduces the need for sonar adjustments

Proven Broadband Sounder™ technology

Dual Frequency 83/200kHz operation



HOOK-3x DSI Key Features

Simple, easy-to-use interface

High resolution LED backlit display

Easily find fish and fish-holding structure with DownScan Imaging™

Dual Frequency 455/800kHz operation



HOOK ICE MACHINES

Lowrance® Ice Machines and the All Season Pack feature high-resolution color displays and dependable Lowrance sonar technology. Each unit comes with a portable pack, battery, a pair of tackle boxes and an ice transducer, ensuring you are covered, whether you are fishing from a small boat, or a stationary location, like ice or a dock.



HOOK-5 Ice Machine

The Hook-5 Ice Machine uses CHIRP Sonar technology to give you a complete view of the underwater environment beneath the ice. It comes with a portable ice-fishing pack with transducer and features enhanced sonar sensitivity, excellent target separation and superior noise rejection, making it easier to see baitfish and gamefish targets – all at an affordable price.

HOOK-3x All-Season Pack

The ultimate electronics accessory for year-round fishing success, the Hook-3x All Season Pack is a convenient and affordable fishing solution that has got you covered whether you are fishing from a small boat, or from a stationary location, like ice or a dock.

HOOK-4 Ice Machine

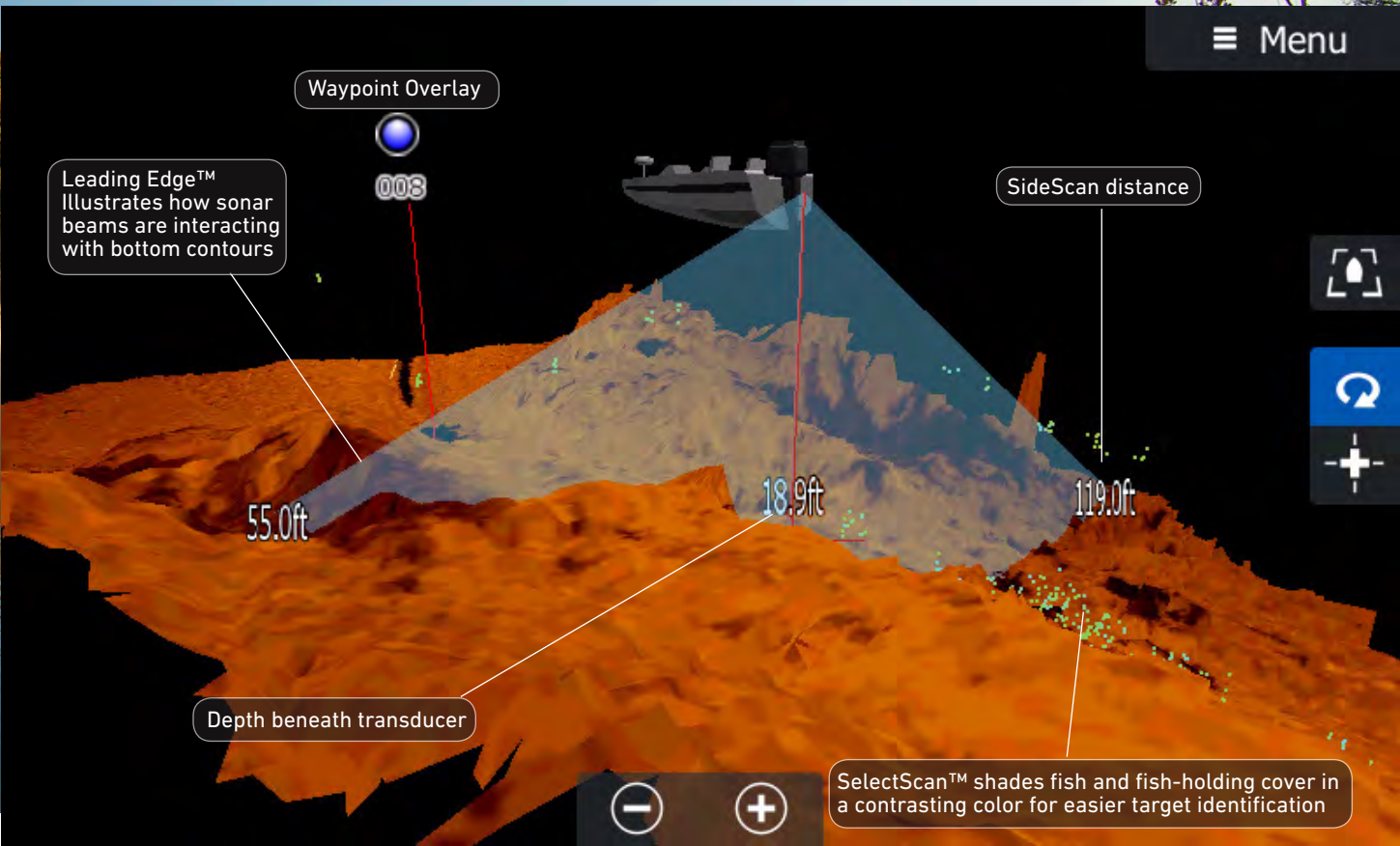
The Lowrance® Hook-4 Ice Machine is a compact, feature-filled fishfinder that comes with a portable ice-fishing pack and transducer, all at an affordable price. It features a high-resolution color display, CHIRP sonar, built-in GPS antenna and top-of-the-line navigation features driven by a simple, easy-to-use interface.

Sonar Innovation

Lowrance's breakthrough sonar technologies produce revealing images with the best possible underwater views of fish and fish-holding structure. Powerful, award- and tournament-winning sonar views from Broadband Sounder™ and CHIRP sonar to StructureScan® 3D with SideScan and DownScan Imaging™ —Lowrance sonar enables you to stay ahead of the game.

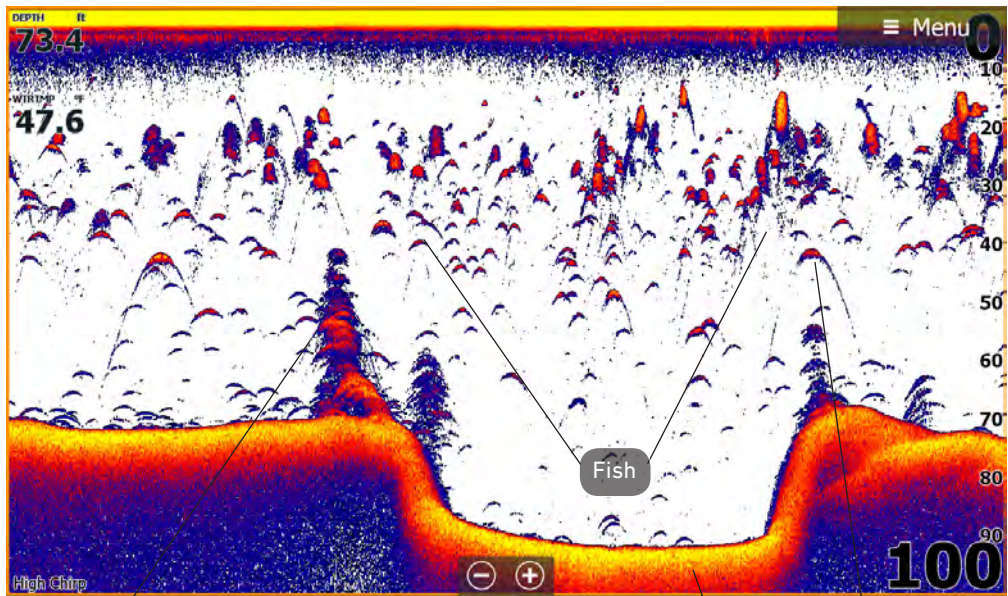
StructureScan® 3D

Powered by multi-beam sonar technology, StructureScan 3D allows you to find key fishing areas faster than ever before by converting scans of underwater terrain and fish-holding structure into high-resolution, 180-degree, three-dimensional views. Position underwater images at any angle with the exclusive ScanTrack™ pan-tilt-rotate control and get the best SideScan and DownScan Imaging™ views with a SideScan range up to 600 ft to each side. Compatible with HDS® Carbon and HDS® Gen3.



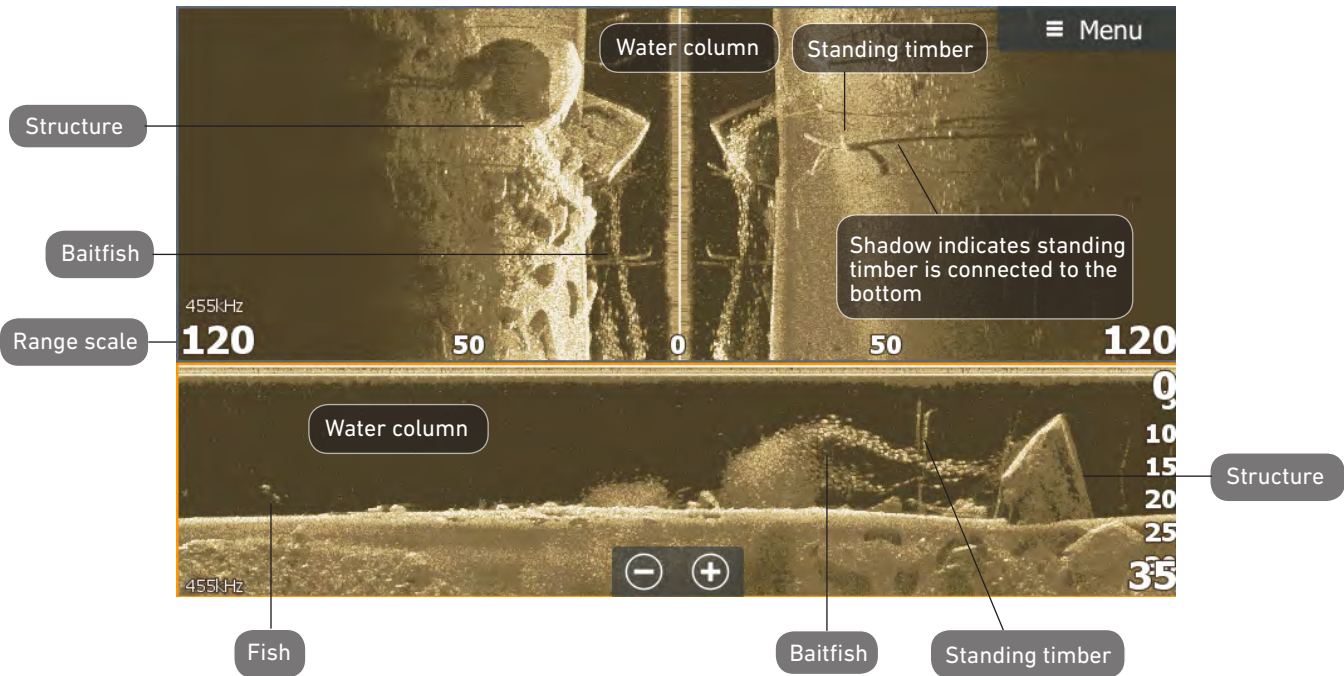
CHIRP and Broadband Sonar

Built-in CHIRP and Broadband Sounder™ sonar feature unparalleled target separation and screen clarity to give anglers the best view of individual fish targets, even when fish targets are close to the bottom or suspended in tight schools. Built into HDS® Carbon, HDS® Gen3, Elite-Ti and Hook-4, -5, -7.



StructureScan® HD

Features today's best fishfinder technologies including SideScan and DownScan Imaging™, StructureMap™ and Trackback™. Get incredibly detailed high-definition views of bottom contours and underwater structure, making it easier to find productive water. Compatible with HDS® Carbon, HDS® Gen3 and Elite-Ti.



GOFREE™

GoFree® is powering the digital marine ecosystem with offerings like GoFree Shop, GoFree HOOKED and GoFree Link apps, and the GoFree Track Vessel Management Solution.

With GoFree, anglers can upload and download maps and update software directly from their fishfinder/chartplotter utilizing the built-in GoFree wireless and cloud connectivity of HDS Carbon, HDS Gen3 and Elite Ti units.

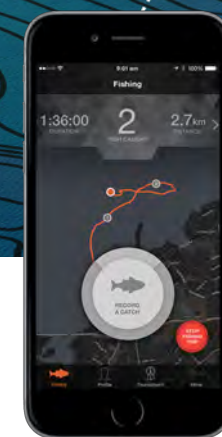
For more information on GoFree products, visit gofreemarine.com.

GoFree Shop

GoFree® Shop is a one-stop shop for marine-mapping needs that gives boaters the capability to download purchases or Insight Genesis® custom maps to a personal computer for immediate use. Visit gofreeshop.com to learn more.

GoFree Link

Available for download on both Android and IOS platforms, GoFree® Link is a free app that allows users to view Lowrance®, Simrad® and B&G® multifunction displays from a smartphone or view/control the displays from a tablet.



GoFree Hooked

A free fishing app for freshwater and saltwater anglers, GoFree® HOOKED allows anglers to challenge friends, family or anglers from the global GoFree HOOKED user community to participate in a real-time competition, and then follow the results via the in-app live leaderboard. Whether competing or fishing alone, the app allows anglers to save detailed trip logs, fish photos and fish details like weight, length and species.

GoFree Track + GoFree Vessel

A powerful vessel management tool, GoFree® Track™ monitors, logs and transmits boating and engine information directly to the GoFree Vessel™ web interface. GoFree Vessel records where you travel and all the important data about your boat and engine. Get instant email alerts about important security and engine performance issues and track every important detail about your boat. GoFree Vessel is designed to help you capture your best times on the water. You can easily attach your smartphone's pictures to your boating history and then create and share customizable TripReplays™ through social media or email.





Insight Genesis™

Use your sonar logs to create custom Insight Genesis® maps with amazing detail and one-foot contours that show key fish-holding areas for greater success on the water, or take advantage of the online Social Map by downloading custom maps created by other users from the global Insight Genesis community. Visit insightgenesis.com to create a free account or to purchase Insight Genesis Premium.

Benefits of Insight Genesis™

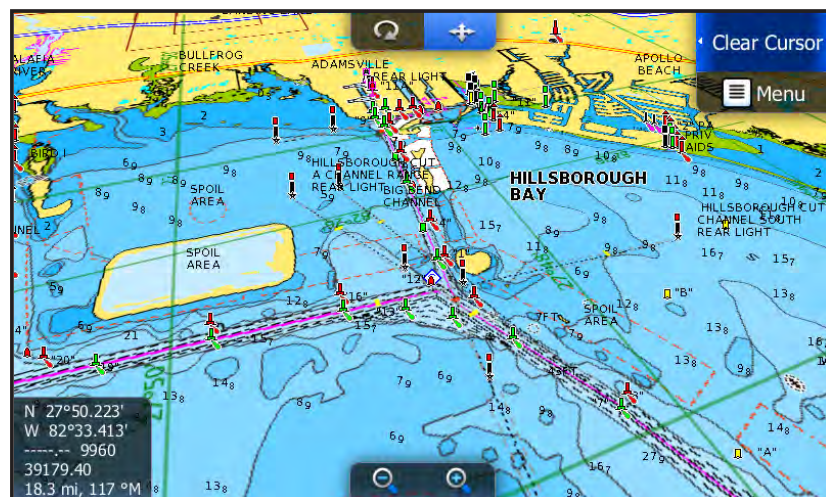
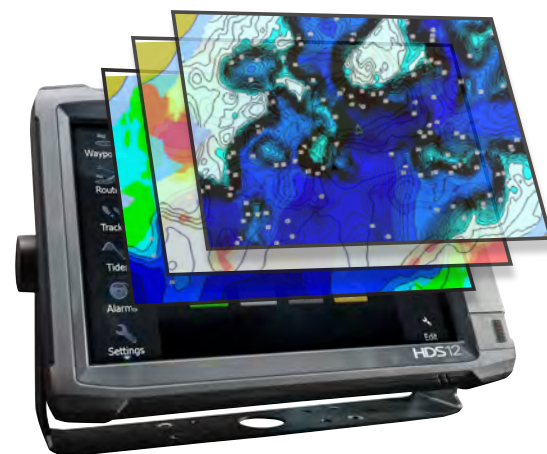
- Transform sonar logs into free custom maps
- View, Download & Contribute to online Social Map water bodies across the globe
- Customize maps with 1-, 3-, 5- or 10-foot blue-shaded contours

A Simple Three-Step Process



Premium Subscription Features

- View and Download Vegetation and Bottom Hardness map overlays
- Highlight depth ranges with custom colors on HDS Carbon, HDS Gen3 and Elite-Ti displays
- Option to merge maps with Social Map or keep them private



Navionics® is the world's largest and most experienced provider in worldwide electronic marine cartography. Navionics charts offer optional high-definition layers, including 3D, Satellite Overlay, Panoramic Port Pictures, Dynamic Tides & Current, and much more.

SonarChart™ Live from Navionics

SonarChart Live allows you to create personal 1 ft/.5 m HD Bathymetry maps that display in real time while navigating. The feature can be enabled by connecting wirelessly to a sonar from a mobile device that has a Navionics boating app installed, or it can be displayed directly on the screen of compatible Lowrance® displays.



NEW! Insight PRO by C-MAP

Insight PRO by C-MAP charts include continental US coverage of inland and coastal waters including Fishing HotSpots™, on a single SD card.

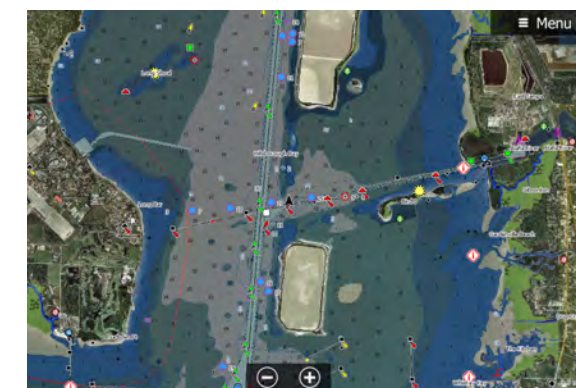
- High definition 1-3' depth contours for thousands of lakes
- High resolution Bathymetric and Shaded Depth Contours
- Custom Color Palette for user-defined depth ranges
- Harbor charts and Port info
- State fish and wildlife regulations and records
- Active Captain crowd-sourced POIs
- Free updates from the Insight Genesis Social Map.



NEW! Lake Insight HD by C-MAP

Lake Insight HD by C-MAP charts include all Insight PRO and HD features on 5 regional SD cards.

- Includes all Insight PRO by C-MAP features
- Satellite Overlay
- Aerial Imagery
- Bird's-Eye Perspective
- Free 1-year subscription to Insight Genesis Premium (\$99 value)



C-MAP MAX-N+

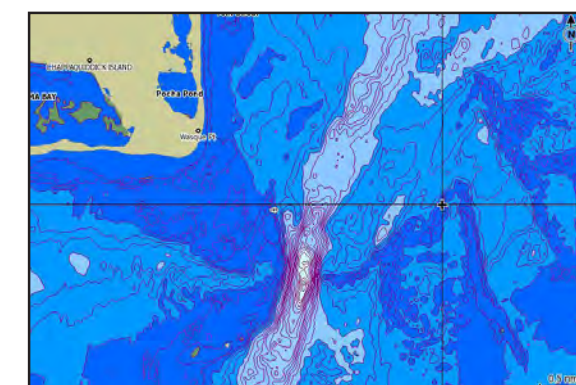
C-MAP MAX-N+ charts provide accurate, up-to-date information, unique features and specialized content to enhance every boating adventure.

- High Resolution Bathymetric (HRB) charts for coastal areas
- Dynamic Tides & Currents
- High-Resolution Aerial Photos with Harbor and Approach Details for enhanced situational awareness
- Marina Info/Port Services helps traveling boaters enjoy sailing worldwide
- Sport Fishing Data (U.S. Only) offers information on wrecks/reefs, Fish ID photos, localized rules/regulations, etc.
- Marine Protected Areas provide boundary and detailed information on Marine Parks and other areas
- Custom Depth Shading for easier identification of different depth ranges
- Local and Wide coverage areas



C-MAP MAX-N

MAX-N provides boaters with accurate C-MAP chart detail, including Depth Areas and Contours, Spot Soundings, NavAids, Light Sectors, Wrecks/Obstructions, Anchorage Areas, Small Craft Facilities and more. Available in Local and Wide coverage areas.



Network Solutions

Whether you are navigating, staying in contact with other boats in the area, monitoring weather radar or just streaming music from your smartphone, Lowrance® offers solutions that not only enhance boater awareness, but put a wide array of entertainment options at your fingertips from SiriusXM® Marine Weather and Audio to SonicHub®2 Bluetooth® audio streaming.



Broadband 4G™

- Instant On™: Solid-state technology produces an immediate, accurate on-screen image, without the lengthy warm-up delay of magnetron pulse radars.
- MARPA Target Tracking: Track up to 10 targets. Requires a heading sensor.
- Safe: Extremely Low Emissions. Emits less radiation than a mobile phone so it can be mounted anywhere.

Broadband 3G™

- Instant On™: Solid-state technology produces an immediate, accurate on-screen image, without the lengthy warm-up delay of magnetron pulse radars.
- Automatic Clarity: Proven automatic harbor/marina and offshore modes.
- MARPA Target Tracking: Track up to 10 targets. Requires a heading sensor.
- Safe: Extremely Low Emissions. Safer than any other radar currently on the market



NMEA 2000® Networking Solutions



NMEA 2000®

Lowrance NMEA 2000 network devices will share and/or display user-selectable data with displays and instruments installed on a NMEA 2000 network.



Precision-9 Compass

The Precision-9 Compass measures motion on nine separate axes to supply the most accurate heading and rate-of-turn information possible for Lowrance autopilot, radar and navigation systems.



Point-1 GPS/GLONASS

Integrated electronic compass provides 10Hz heading for chart stabilization and radar overlay, plus accurate vessel heading, even at low speeds.



NAIS-400 Class B AIS

Reduce your risk of collision with this latest generation, fully integrated, Class-B AIS transponder — essential for navigating today's busy shipping lanes and congested ports.

Link-8 DSC VHF Radio

The Link-8 and -5 fixed-mount, Class D DSC VHF system has packed all of the best safety features into a compact, IPX7 water-proof housing with 25W/1W transmission power.



Link-2 DSC VHF Radio

Advanced and affordable 5W/1W waterproof VHF handheld. A great way to make sure you get back to shore safely. Great as a backup radio, it features a built-in 12-channel GPS receiver, trackplotter, Great Circle navigation and more. Plus it floats!



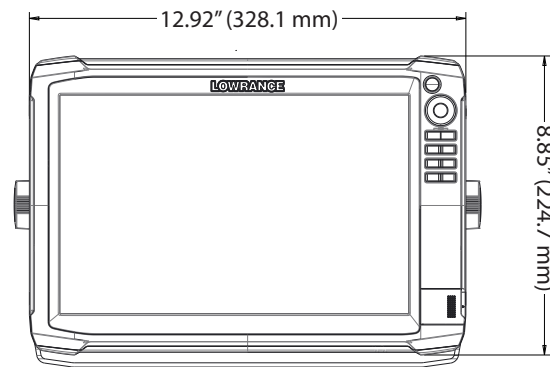
SonicHub®2 Marine Audio

The ultimate marine audio entertainment system, the Lowrance® SonicHub2 features integrated Bluetooth®, allowing you to stream music including Pandora® (where available) from a smartphone or tablet. The system supports AM/FM radio, playback from a USB drive or iPod and features SiriusXM® radio (US only) connectivity — all with full control from your HDS display.

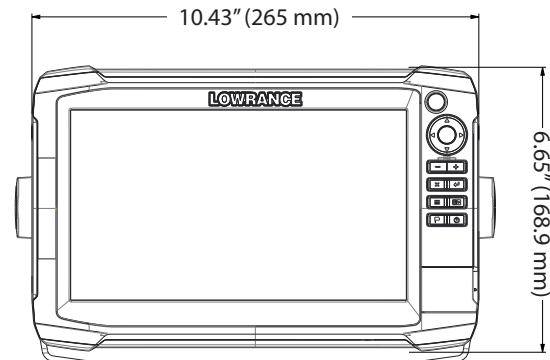
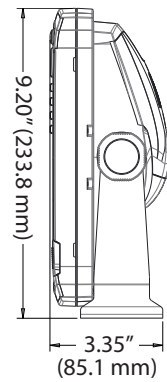
WM-3 SiriusXM™ Module (US)



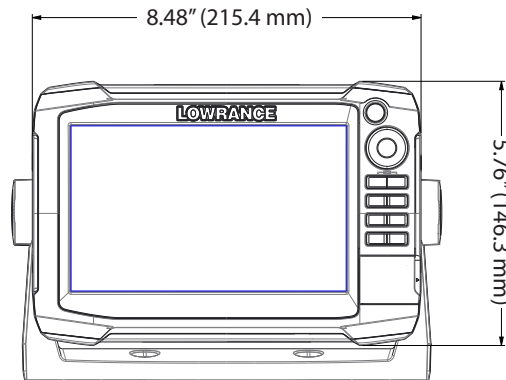
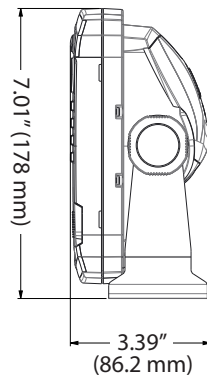
Bring the power of an entire weather bureau to your Lowrance® HDS®, including weather radar, forecasts, weather warnings and roadside fuel prices, plus up to 220 expanded audio channels — all controlled directly from your multifunction display.



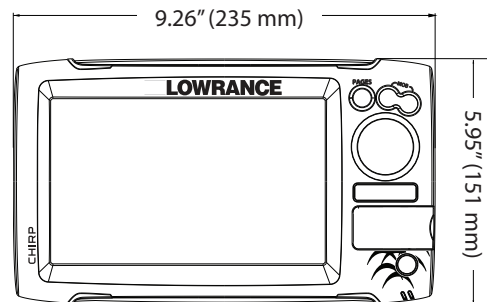
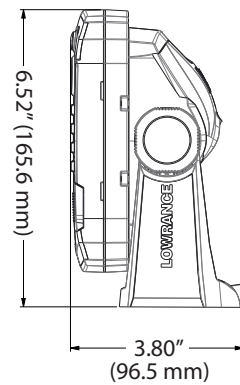
HDS-12 Carbon, HDS-12 Gen3



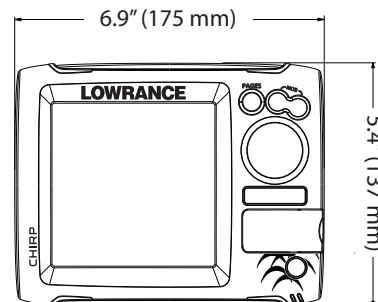
HDS-9 Carbon, HDS-9 Gen3



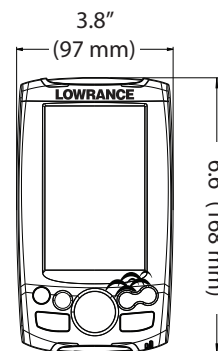
HDS-7 Carbon, HDS-7 Gen3



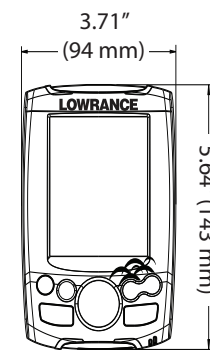
HOOK-7/7x



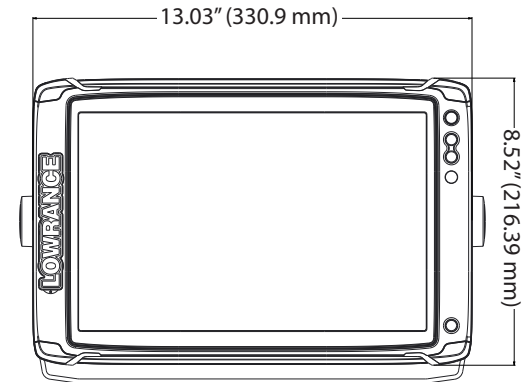
HOOK-5/5x



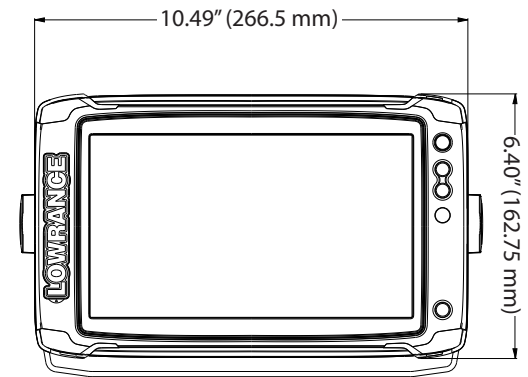
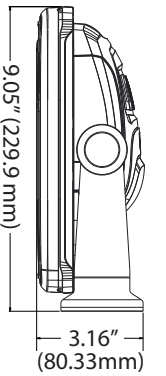
HOOK-4/4x



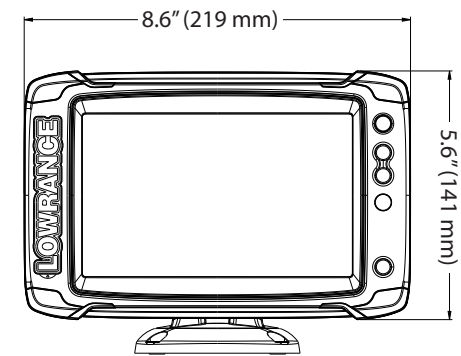
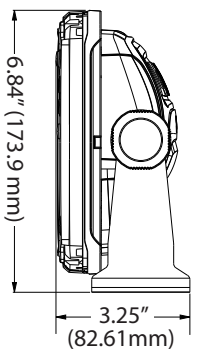
HOOK-3x/3x DSI



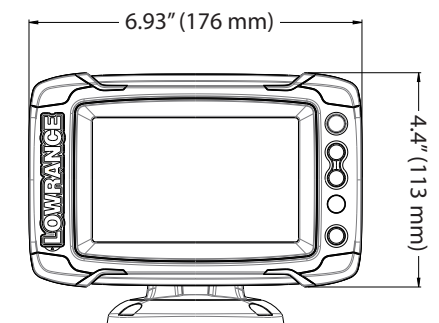
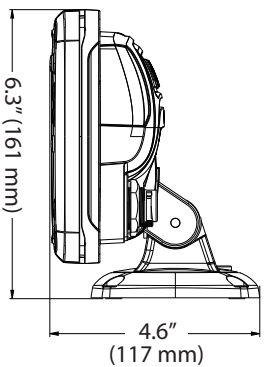
Elite-12 Ti



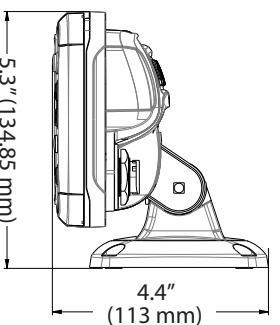
Elite-9 Ti



Elite-7 Ti



Elite-5 Ti



Lowrance® Feature Guide

Capabilities	HDS Carbon	HDS Gen3	Elite-Ti * Excludes Elite-5 Ti	HOOK * Excludes 3x, 3x DSI ** Excludes non-DSI *** Excludes 4x, 3x, 3x DSI
SolarMAX HD Display	●			
SolarMAX Display		●	●	●
Touchscreen	●	●	●	
Multi-touch	●	●		
High-Performance Processor	●			
CHIRP	●	●	●	●*
DownScan Imaging	●	●	●	●**
StructureScan HD	●	●	●	
StructureScan 3D	●	●		
TotalScan All-In-One Transducer	●	●	●	
Network Dual Sounder	●			
Dual Channel CHIRP	●			
Internal GPS Antenna (Excludes sonar only displays)	●	●	●	●
Wireless Connectivity	●	●	●	
NMEA 2000	●	●	●*	
NMEA 0183	●	●	●	●***
Engine Data Sensors	●	●	●*	
SmartSteer Motoguide Xi5 Trolling Motor Control	●	●	●*	
SmartSteer Outboard Pilot	●	●		
Power-Pole Anchors	●	●	●	
SiriusXM Marine Weather	●	●		
Radar	●	●		
SonicHub 2	●	●		
Ethernet	●	●		

Lowrance® Part Number List



HDS Carbon		
HDS-12 Carbon	Med/High CHIRP with C-MAP Insight Mapping and TotalScan Transducer	000-13689-001
HDS-12 Carbon	Med/High CHIRP with C-MAP Insight Mapping and StructureScan 3D Bundle	000-13686-002
HDS-12 Carbon	Med/High CHIRP with C-MAP Insight Mapping and No Transducer	000-13686-001
HDS-9 Carbon	Med/High CHIRP with C-MAP Insight Mapping and TotalScan Transducer	000-13683-001
HDS-9 Carbon	Med/High CHIRP with C-MAP Insight Mapping and StructureScan 3D Bundle	000-13680-002
HDS-9 Carbon	Med/High CHIRP with C-MAP Insight Mapping and No Transducer	000-13680-001
HDS-7 Carbon	Med/High CHIRP with C-MAP Insight Mapping and TotalScan Transducer	000-13677-001
HDS-7 Carbon	Med/High CHIRP with C-MAP Insight Mapping and StructureScan 3D Bundle	000-13674-002
HDS-7 Carbon	Med/High CHIRP with C-MAP Insight Mapping and No Transducer	000-13674-001



HDS Gen3		
HDS-12 Gen3	Med/High CHIRP with Insight Mapping and TotalScan Transducer	000-13266-001
HDS-12 Gen3	Med/High CHIRP with Insight Mapping and StructureScan 3D Transducer	000-12916-001
HDS-12 Gen3	Med/High CHIRP with Insight Mapping and No Transducer	000-11794-001
HDS-9 Gen3	Med/High CHIRP with Insight Mapping and TotalScan Transducer	000-13265-001
HDS-9 Gen3	Med/High CHIRP with Insight Mapping and StructureScan 3D Transducer	000-12915-001
HDS-9 Gen3	Med/High CHIRP with Insight Mapping and No Transducer	000-11789-001
HDS-7 Gen3	Med/High CHIRP with Insight Mapping and TotalScan Transducer	000-13263-001
HDS-7 Gen3	Med/High CHIRP with Insight Mapping and StructureScan 3D Transducer	000-12914-001
HDS-7 Gen3	Med/High CHIRP with Insight Mapping and No Transducer	000-11784-001



Elite-Ti		
Elite-12 Ti	C-MAP Insight Mapping with TotalScan Transducer	000-13718-005
Elite-12 Ti	C-MAP Insight Mapping with Mid/High/DownScan Transducer	000-13719-001

Elite-12 Ti	C-MAP Insight Mapping with No Transducer	000-13717-001
Elite-9 Ti	C-MAP Insight Mapping with TotalScan Transducer	000-13274-005
Elite-9 Ti	C-MAP Insight Mapping with Mid/High/DownScan Transducer	000-13273-001
Elite-9 Ti	C-MAP Insight Mapping with No Transducer	000-13272-001
Elite-7 Ti	C-MAP Insight Mapping with TotalScan Transducer	000-12419-001
Elite-7 Ti	C-MAP Insight Mapping with Mid/High/DownScan Transducer	000-12417-001
Elite-7 Ti	C-MAP Insight Mapping with No Transducer	000-12416-001
Elite-5 Ti	C-MAP Insight Mapping with TotalScan Transducer	000-12423-001
Elite-5 Ti	C-MAP Insight Mapping with Mid/High/DownScan Transducer	000-12421-001
Elite-5 Ti	C-MAP Insight Mapping with No Transducer	000-12420-001



HOOK		
HOOK-7	High Detail Basemap with Mid/High/DownScan Transducer	000-12664-001
HOOK-7	High Detail Basemap with No Transducer	000-12663-001
HOOK-7x	Mid/High/DownScan Transducer	000-12660-001
HOOK-5	High Detail Basemap with Mid/High/DownScan Transducer	000-12656-001
HOOK-5	High Detail Basemap with Mid/High/DownScan Transducer	000-12655-001
HOOK-5x	Mid/High/DownScan Transducer	000-12653-001
HOOK-4	High Detail Basemap with Mid/High/DownScan Transducer	000-12647-001
HOOK-4x	Mid/High/DownScan Transducer	000-12641-001
HOOK-4x	Mid/High Transducer	000-12640-001
HOOK-3x	83/200kHz Broadband Transducer	000-12635-001
HOOK-3x DSI	455/800kHz DownScan Transducer	000-12636-001



Ice Machines		
HOOK-5x	Mid/High Ice Machine - PPP-18i	000-12654-001
HOOK-4	Mid/High Ice Machine	000-12650-001
HOOK-4x	Mid/High Ice Machine	000-12643-001
HOOK-3x	All Season Pack with 83/200 kHz Transducer	000-12368-001

NMEA 2000 Network Sensors		
Fluid Level	NMEA 2000 Fluid Level Sensor	000-11518-001
Fuel Flow	NMEA 2000 Fuel Flow Sensor	000-11517-001
Fuel Data	NMEA 2000 Fuel Data Manager	000-11522-001
Pressure Sensor	NMEA 2000 Pressure Sensor	000-11523-001
Temp Sensor	NMEA 2000 Temperature Sensor	000-11520-001
Thru-Hull Temp	NMEA 2000 Thru-Hull Temperature Sensor	000-11521-001
Speed Sensor	NMEA 2000 Paddlewheel Speed Sensor	000-11519-001
Weather and Audio		
WM-3	WM-3 SiriusXM Marine Weather Module	000-11076-001
SonicHub2	SonicHub2 Marine Audio Server	000-12301-001
SonicHub2 Module	SonicHub2 Marine Audio Server - Module Only	000-12302-001
Speaker Pack	SonicHub2 Marine Audio Server Spare Speaker Pack	000-12304-001
Navigation		
Broadband 4G Radar	Broadband 4G Radar	000-10419-001
Broadband 3G Radar	Broadband 3G Radar	000-10418-001
6kW HD Radar Kit	6kW HD Radar Kit	TXO6S-1
Precision-9 Compass	Precision-9 Solid State Compass	000-12607-001
NAIS-400	NAIS-400 System , Class B AIS with GPS Antenna	000-10980-001
Point-1 Antenna	Point-1 Heading and GPS Sensor	000-11047-001
Outboard Pilot Hydraulic Pack	Lowrance Outboard Pilot Hydraulic Pack	000-11748-001
Outboard Pilot Cablesteer Pack	Lowrance Outboard Pilot Cablesteer Pack	000-11749-001
Communication		
Link-8 VHF	Link-8 Class D DSC VHF Radio	000-10789-001
Link-5 VHF	Link-5 Class D DSC VHF Radio	000-10788-001
Link-2 VHF	Link-2 DSC VHF HandHeld Radio	000-10782-001
Mounting Accessories		
Kayak Scupper	Kayak Scupper Hole Transducer Mount	000-10606-001
Mapping		
Insight Pro	Insight Pro by C-MAP Card	000-13732-001
Lake Insight HD	Lake Insight HD by C-MAP Card - West US	000-13727-001
Lake Insight HD	Lake Insight HD by C-MAP Card - Northeast US	000-13728-001
Lake Insight HD	Lake Insight HD by C-MAP Card - Southeast US	000-13729-001
Lake Insight HD	Lake Insight HD by C-MAP Card - North Central US	000-13730-001
Lake Insight HD	Lake Insight HD by C-MAP Card - South Central US	000-13731-001

Lowrance® Transducer List



Transom Mount Skimmer® Models

Lowrance® high speed Skimmer transom-mount transducers provide the clearest sonar returns by gliding through the water without producing screen cluttering cavitation.



Shoot-Thru Models

Lowrance® Shoot-thru transducers send sonar signals through fiberglass hulls. Fastened to the hull with epoxy, shoot-thru models are perfect for boat owners that don't want to drill/cut holes in their boat.



Thru-Hull Models

Lowrance® thru-hull transducers are the perfect solution for boats that don't support a transom mount and/or boat owners who prefer a more tidy, out-of-the-way installation.

Transducers					
Transom Mount					
Transducer	Tilt	Frequency	Compatible Units	Connector	Part Number
HST-WSBL		Med/High CHIRP	HDS® Carbon/HDS® Gen3/HOOK-7/HOOK-5/HOOK-4	7-pin	000-0106-72
HST-DFSBL		Low/High CHIRP	HDS® Carbon/HDS® Gen3/HOOK-7/HOOK-5/HOOK-4	7-pin	000-0106-77
HST-WSU		Med/High	HOOK-3x	Uni-plug	000-0106-48
HDI Skimmer (Lowrance Blue)		Med/High CHIRP/DownScan	HDS® Carbon/HDS® Gen3/Elite-Ti	9-Pin xSonic	000-12570-001
HDI Skimmer		Low/High CHIRP/DownScan	HDS® Carbon/HDS® Gen3/Elite-Ti	9-Pin xSonic	000-12569-001
HDI Skimmer		Med/High CHIRP/DownScan	HDS® Carbon/HDS® Gen3//HOOK-7/HOOK-5/HOOK-4	7-Pin	000-10976-001
DSI Skimmer		DownScan	Hook-3x DSI	Uni-plug	000-10260-001
TOTALSCAN™		Med/High/StructureScan HD	HDS® Carbon/HDS® Gen3/Elite-Ti		000-12568-001
StructureScan® 3D		3D/Sidescan/DownScan	HDS® Carbon/HDS® Gen3		000-12395-001
Airmar® P66		Low/High CHIRP	HDS® Carbon/HDS® Gen3/Elite-Ti	9-Pin xSonic	000-13919-001
Airmar® TM260		Low/High CHIRP	HDS® Carbon/HDS® Gen3	9-Pin xSonic	000-13904-001
Airmar® TM150M		Medium (95-155)	HDS® Carbon/HDS® Gen3	7-Pin	000-11302-001
Airmar® TM275LH-W		Low (42-65)/High (150-250)	HDS® Carbon	9-Pin xSonic	000-13770-001
Thru-Hull					
Transducer	Tilt	Frequency	Compatible Units	Connector	Part Number
StructureScan® 3D (Stainless Steel, single)		3D/Sidescan/DownScan	HDS® Carbon/HDS® Gen3		000-13559-001
StructureScan® 3D (Stainless Steel, pair)		3D/Sidescan/DownScan	HDS® Carbon/HDS® Gen3		000-13560-001
StructureScan® HD (Plastic, single)"		Sidescan/DownScan	HDS® Carbon/HDS® Gen3		000-11029-001
StructureScan® HD (Stainless Steel, single)"		Sidescan/DownScan	HDS® Carbon/HDS® Gen3		000-11459-001
StructureScan® HD (Stainless Steel, pair)"		Sidescan/DownScan	HDS® Carbon/HDS® Gen3		000-11460-001
Bronze HDI	0	Low/High CHIRP/DownScan	HDS® Carbon/HDS® Gen3/Elite-Ti	9-Pin xSonic	000-13905-001
	12	Low/High CHIRP/DownScan	HDS® Carbon/HDS® Gen3/Elite-Ti	9-Pin xSonic	000-13906-001
	20	Low/High CHIRP/DownScan	HDS® Carbon/HDS® Gen3/Elite-Ti	9-Pin xSonic	000-13907-001

Airmar® P319	0	Low/High CHIRP	HDS® Carbon/HDS® Gen3	9-Pin xSonic	000-13915-001
Airmar® SS60	0	Low/High CHIRP	HDS® Carbon/HDS® Gen3	9-Pin xSonic	000-13784-001
	12	Low/High CHIRP	HDS® Carbon/HDS® Gen3	9-Pin xSonic	000-13785-001
	20	Low/High CHIRP	HDS® Carbon/HDS® Gen3	9-Pin xSonic	000-13786-001
Airmar SS164	0	Low/High CHIRP	HDS® Carbon/HDS® Gen3	9-Pin xSonic	000-13916-001
	12	Low/High CHIRP	HDS® Carbon/HDS® Gen3	9-Pin xSonic	000-13917-001
	20	Low/High CHIRP	HDS® Carbon/HDS® Gen3	9-Pin xSonic	000-13918-001
Airmar® SS260		Low/High CHIRP	HDS® Carbon/HDS® Gen3	9-Pin xSonic	000-13783-001
Airmar® B150M	0	Medium (95-155)	HDS® Carbon/HDS® Gen3	9-Pin xSonic	000-13920-001
	12	Medium (95-155)	HDS® Carbon/HDS® Gen3	9-Pin xSonic	000-13921-001
	20	Medium (95-155)	HDS® Carbon/HDS® Gen3	9-Pin xSonic	000-13922-001
Airmar® SS75M	0	Medium (80-130)	HDS® Carbon/HDS® Gen3	9-Pin xSonic	000-13908-001
	12	Medium (80-130)	HDS® Carbon/HDS® Gen3	9-Pin xSonic	000-13909-001
	20	Medium (80-130)	HDS® Carbon/HDS® Gen3	9-Pin xSonic	000-13910-001
Airmar® SS75H	0	High (130-210)	HDS® Carbon/HDS® Gen3	9-Pin xSonic	000-13911-001
	12	High (130-210)	HDS® Carbon/HDS® Gen3	9-Pin xSonic	000-13912-001
	20	High (130-210)	HDS® Carbon/HDS® Gen3	9-Pin xSonic	000-13913-001
Airmar® SS175L	0	Low (40-60)	HDS® Carbon/HDS® Gen3	9-Pin xSonic	000-13774-001
	12	Low (40-60)	HDS® Carbon/HDS® Gen3	9-Pin xSonic	000-13775-001
	20	Low (40-60)	HDS® Carbon/HDS® Gen3	9-Pin xSonic	000-13776-001
Thru Hull					
<i>Transducer</i>	<i>Tilt</i>	<i>Frequency</i>	<i>Compatible Units</i>	<i>Connector</i>	<i>Part Number</i>
Airmar® SS175M	0	Medium (85-135)	HDS® Carbon/HDS® Gen3	9-Pin xSonic	000-13777-001
	12	Medium (85-135)	HDS® Carbon/HDS® Gen3	9-Pin xSonic	000-13778-001
	20	Medium (85-135)	HDS® Carbon/HDS® Gen3	9-Pin xSonic	000-13779-001
Airmar® SS175H-W	0	High (150-250)	HDS® Carbon/HDS® Gen3	9-Pin xSonic	000-13780-001
	12	High (150-250)	HDS® Carbon/HDS® Gen3	9-Pin xSonic	000-13781-001
	20	High (150-250)	HDS® Carbon/HDS® Gen3	9-Pin xSonic	000-13782-001
Trolling Motor/Shoot-Thru Hull					
<i>Transducer</i>		<i>Frequency</i>	<i>Compatible Units</i>		<i>Part Number</i>
PD-WBL (Shoot-thru hull only)		Med/High CHIRP	HDS® Carbon/HDS® Gen3//HOOK-7/HOOK-5/HOOK-4	7-pin	000-0106-73
PDRT-WSU* (Remote Temp)		Med/High CHIRP	Hook-3x	Uni-plug	000-0106-69
PD-WSU		Med/High CHIRP	Hook-3x	Uni-plug	000-0106-52
PDT-WBL		Med/High CHIRP	HDS® Carbon/HDS® Gen3//HOOK-7/HOOK-5/HOOK-4	7-Pin	000-0106-74
PDT-WSU		Med/High CHIRP	Hook-3x	Uni-plug	000-0106-50
SpotlightScan™*		Surround-Scan	HDS® Carbon/HDS® Gen3		000-11303-001
Airmar® P79 (Shoot-thru hull only)		Low/High CHIRP	HDS® Carbon/HDS® Gen3//HOOK-7/HOOK-5/HOOK-4	7-Pin	000-0136-03
*Trolling Motor Mount Only					
Adaptors					
7-to-9 Pin Adaptor Cable	Connects 7-Pin transducers to displays with 9-Pin xSonic connectors (HDS Carbon/HDS Gen3/Elite-Ti)				000-13313-001
9-to-7 Pin Adaptor Cable	Connects 9-Pin xSonic transducers to displays with 7-pin connectors (HOOK-7/HOOK-5/HOOK-4)				000-12571-001

Lowrance® Apparel/Merchandise

Get the latest apparel and gear at the official Lowrance® online store - www.hicorpinc.com/navicoretail



**Royal & Charcoal
Structured Mesh Back Cap**

- Velcro closure
- Soft mesh back
- 3D Lowrance Logo
- White top stitching
- Structured



**Royal & White
Structured Mesh Back Cap**

- Velcro closure
- Mesh back
- White top stitching
- Structured



Royal & White Visor

- Velcro closure
- White top stitching



Royal Hooded Sweatshirt

- 100% polyester moisture management fabric
- Side and underarm textured waffle weave panels
- Front pouch pocket with two Velcro closure top pockets with headset opening
- Poly rib cuffs and waistband
- Embroidered Badger logo on left sleeve cuff



Navy NIKE Dri-FIT Polo

- 4.4-oz., 100% polyester micro pique fabric
- Dri-FIT moisture management technology
- Design features a flat knit collar and three-button placket
- Open hem sleeves
- Nike Swoosh design trademark is embroidered on the left sleeve



Heather Grey Softstyle Cotton T-Shirt

- 90% cotton/10% polyester
- Rib knit collar



Royal Lowrance Toolbag

- Multiple exterior pockets and slots for tools
- 9" H x 8" W x 14" L
- 600 denier polyester with metal frame
- Logo imprint above front pocket
- Removable and adjustable padded shoulder strap



Lowrance Head & Neckware

- 100% Polyester microfiber
- 10" x 17" The Fandana tubular design
- One size fits all!



Lowrance Vehicle Decal

- colors: Royal and White

* All merchandise is subject to change with availability and styles.



LOWRANCE®

FIND. NAVIGATE. DOMINATE.

Telephone: 1.800.628.4487

www.lowrance.com

Products, features and specifications subject to change without notice.
© 2017 Navico® 985-11443-001



facebook.com/lowrance



twitter.com/lowrancefishing



youtube.com/user/lowrance



instagram.com/lowrancefishing